



TOOWOOMBA BRIDGE CLUB

NEWSLETTER



February 2010

55 Stuart Street, Toowoomba 4350
PO Box 45, Northlands 4350

Editor: Floyd Wilson

email: secretary@toowoombabridgeclub.com.au

REGULAR ITEMS:

<i>President's Report</i>	1
<i>Management Committee</i>	2
<i>New Master Rankings</i>	2
<i>Membership Secretary's Report</i>	3
<i>Congress Convenor's Report</i>	4
<i>Treasurer's Report</i>	4
<i>Providor's Report</i>	5
<i>Club Teacher's Report</i>	5
<i>Garden Report</i>	6

OTHER ITEMS:

<i>Howell Movements</i>	7
<i>Upcoming Events and Championships</i>	8-10

President's Report



It's good to be back! All of the regular club sessions are now back in full swing with very healthy numbers of players at each session. Also, Supervised Play and Restricted Pairs commence on Monday 1st February under the expert direction of Mary McConachy and Glenys Clift. We received numerous requests to continue bridge on Mondays over the break and so we did, calling it "Holiday Bridge". It proved to be very popular. I was keen on running these Monday sessions, but a few last minute developments saw me head off to Tasmania and then to Canberra for the GNP. Phil Dobney stepped in and did a wonderful job keeping everything running smoothly – thank you Phil!!!!

At its January meeting, your Management Committee decided to proceed with the car park extensions to the South East of the building for an approximate cost of \$60,000. This will be a slow process, and our Project Manager, Ray Moore, is presently developing the plans and Development Application (needed because the car park is deemed a change in use of the vacant land). We are full of hope that we will receive approval from

the planning department of Council, but understand there are some hurdles to overcome. Until then, we need to continue to be careful and considerate in our parking. Please park correctly between the lines and only use the grassy area to the South of the building when the regular car parks are full. There are five parks allocated for people displaying a Queensland Disability Parking Permit, and the one adjacent to the building is specifically for wheelchair access. Please do not use these parks inappropriately.

We had a bit of adventure early in the new year with a significant leak in the roof above the office, and intermittent faults with the air conditioning. You might also have noticed one of the (noisy) Water Coolers has gone on holiday – we hope he comes back fully recovered and quieter than before. On your behalf, I again express thanks to Will Higgins who does a wonderful job in all matters of building maintenance.

We are continuing to trial Sunday Bridge – it will usually be on the 3rd Sunday of the month (check the program book and notice board) and will be scored locally with green master points. As an added bonus, the session will also be rescored along with many other clubs around Australia as part of the Nationwide Pairs and any Toowoomba folk who do well overall will also earn red master points. We have also received some requests to consider running a Restricted Pairs session on Saturday. At present, numbers are not sufficient to do this, but we will consider grading the field (ie dividing into a newer and a stronger section) if numbers get high enough.

As we settle into the new year and focus on improving our bridge and bridge partnerships, I also thank all of the Directors, for without you there would be no bridge sessions.

Thanks J
Chris Snook
President



MANAGEMENT COMMITTEE

PRESIDENT	Chris Snook
VICE-PRESIDENT	Bruce Hinchliffe
SECRETARY	Annette Sullivan
TREASURER	Carmel Caton
COMMITTEE MEMBERS	Glenys Clift Henry Eastment Pam Gebbett Denise Hartwig Ray Moore Floyd Wilson Joyce Ziesemer
MASTERPOINT SECRETARY	Chris Snook
PROVIDOR	Joyce Ziesemer
CONGRESS CONVENOR	Denise Hartwig
MEMBERSHIP SECRETARY	Glenys Clift
QBA DELEGATES	Chris Snook/ Henry Eastment/ Bruce Hinchliffe
ZONE REPRESENTATIVE	Chris Snook/ Denise Hartwig
PRESS OFFICER	Kim Nicoll
LIBRARIAN	Henry Eastment
NEWSLETTER EDITOR	Floyd Wilson
CLUB TEACHER	Glenys Clift
MEMBERSHIP BADGES	Pam Gebbett
TENANCY CO-ORDINATOR	Bruce Hinchliffe
GARDENING CO-ORDINATOR	Lisa Moore
MAINTENANCE CHAIRPERSON	Will Higgins
HOUSEKEEPER	Bette Flamstead

Three sub-committees coordinate much of the work in the clubrooms:

Tournament Sub-committee: Talk to your Director or a Committee member about the activities of this sub-committee, which cover all facets of bridge play at the club.

Social and Fundraising Sub-committee: This group helps organise all the social events at the club such as Melbourne Cup party, Christmas party, Birthday party and perhaps a few other special events through the year.

Maintenance Sub-committee: This sub-committee, led by Will Higgins, looks after all of the building and surrounding gardens. If you notice something needs repair, then let Will know by having a chat to him (he tends to play Tuesday nights and Saturdays) or add a note to the "maintenance register" next to the results noticeboard. Tell the Director if you think the matter is more urgent.



NEW MASTER RANKINGS

Congratulations are extended to the following members who have achieved new Master rankings since the last newsletter:

GRADUATE MASTER Mancel Robinson
Thomas Robinson
Judy Desjardins

CLUB MASTER Fleur Hopkins
Pat Turner
Glenda Filbee
John Hede
Helen Payne

LOCAL MASTER Glennis Cowell
Noela Cribb
Walter Hendriks
Shirley Hooper

***LOCAL MASTER** Bruce Hinchliffe
Dana McCown
Carmen Powell

****LOCAL MASTER** Shaunagh Cowell
Ray Moore

STATE MASTER Barbara Gill
Margaret Lavers
Charles Leicht
Melba Leicht
Laurie McRoberts
Frances Jackson
Judith Leathley
Ray Steele

***STATE MASTER** Robert Fulton

NATIONAL MASTER John Erlandson

***NATIONAL MASTER** Ruth Hanson
Joanne Todd

****NATIONAL MASTER** Merna Atkins
Jill Fulloon

LIFE MASTER Nonie McCay

BRONZE LIFE MASTER Glenys Clift



WELL DONE!



Membership Secretary's Report

NEW MEMBERS



We would like to give a very warm welcome to the following new members who have recently joined the Toowoomba Bridge Club.

Coral Apel
Anne Arnold
Sue Brazier
Lizzie Carr
Barry Copley
Peter Evans
Bud Ford
Irene Griffiths
Mary James
Carol Lombardo
Marg Mander-Jones
Miriam Meyer
Nev O'Connor
William Oxenham
Robert Ramsay
Jan Stringer
Nan Thompson
John Thompson

Happy Bridging!

MEMBERSHIP SUBS for 2010

Hi everyone, it is that time of year again when membership subscriptions are due. We will be submitting our membership list to the ABF in March. Therefore, to be included, you will need to have your subs paid before then.

Ordinary Home Members	\$43.00
Alternate Members	\$20.00
Associate Members	\$20.00

Subs can be paid to any Director or the Treasurer and must be receipted in the Membership Subscription Receipt Book, which is separate to other receipt books. So please make sure you receive a receipt at the time of paying. Anyone paying by mail will receive a receipt in the post.

The Australian Bridge Federation is very strict about the lodgement of members and gives us no leeway if we make mistakes. So if you receive a letter from me in February, it is not a demand for

payment, but rather a reminder that as far as our records are concerned, you are not financial. If you are not renewing your membership for any reason, could you please let me know.

Cheers,

Glenys Clift
Membership Secretary



Congress Convenor's Report

The Toowoomba Swiss Teams was held on 25th October 2009. A field of 20 teams contested including participants from Toowong, Surfers Paradise, Ipswich, Lockyer, Warwick and Darling Downs Clubs.

Joyce, Carmel and many helpers in the kitchen put on a delightful spread and many thanks to them for helping to make it a great day.

This being my first congress, I couldn't have done it without the assistance of Robbie Fulton, Chris Snook and Annette Sullivan, whose help was invaluable.

It was a very successful day overall with the Championship Winners being Neville Francis, Annette Maluish, John Luck and Ivy Luck.

Upcoming Events:

14th February	Warwick Swiss Pairs
27th Feb – 6th Mar	Gold Coast Congress
21st March	Dalby Swiss Pairs
28th March	Toowoomba Novice Pairs
1st-3rd May	Toowoomba Pairs & Teams

Hoping to see many of you at some of the above events.

Denise Hartwig
Congress Convenor



Treasurer's Report

The Club continues to maintain a very sound financial position. Since the last Newsletter a further \$10,000 has been transferred to a Term Deposit earning 5% which matures in March. This brings the total of our Reserves in Fixed Deposits to \$70,000 which should put us in the position where we can proceed immediately with the plans to extend the carpark if and when Council grants approval. The project will empty our coffers (with the exception of the provision made for Working Capital) so we will have to continue to beaver away re-building our Reserves. We average a surplus each month of around \$2,000 which is a comfortable margin to work with as well as allowing us to have something in reserve.

I have recently converted the Club book-keeping to a computerized system and will post a copy of the monthly Income and Expenditure Reports as well as the Year to Date results on the Noticeboard following each month's Management Committee Meeting, if anyone would like to have a look. If you are really into figures I can provide you with the Ledger Reports that will give you the nitty-gritty for each item in the Statement.

At the AGM, Jorden & Rosemary Steenbeek very generously undertook to donate the money for a Cash-Draw Safe. The safe has now been installed and is working a treat. Thank you Jorden and Rosemary for your generosity.

Thank you also to the Members whose generosity made the Christmas Party a very economical one. Joyce will talk more about the events of the day but just out of interest the financials were commendable – take note Wayne Swan/Andrew Fraser!!

The raffles which brought in \$520 went a long way towards defraying our costs as did the donation of many of the prizes. Special thanks to Judy Bowly (the magnificent hamper) and Joyce Ziesemer (Christmas Cake maker extraordinaire) and to the other Members who donated the lovely array of other prizes we had on the day. We also had \$75 in cash donations which contributed to the purchase of prizes, flowers and the little touches that made the day special. We were able to further off-set our costs with the proceeds from the sale of the left-over salad. Our gross cost ended up at \$7-20 per head which, for the standard of the meal, was an excellent result but with the proceeds of the raffles etc taken into account the day cost \$3-

50 per head. All the perishables were sold and the surplus ham was frozen and has been used successfully on the sandwiches for the sessions since New Year. All up, the only wastage was what was scraped off the plates. Well done everyone!

On a personal note, thank-you to the people who look after the money at each session and keep the cash-flow moving. There are a few regulars that I would like to acknowledge and my apologies to any unsung heroes that I leave out: Glenys Clift, Helen Holmes, Lee Hore, Phil Dobney, Robbie Fulton, Annette Sullivan, and Henry Eastment.

Thank you to all.

Carmel Caton
Treasurer



ARGUING WITH DIRECTORS

We are very fortunate in our club in that we have so many competent Directors who have gone to the trouble of sitting the Director's exams and are willing to run the sessions and have their own game interrupted while they attend to Director's calls.

And while I am the first to admit that occasionally we can make mistakes with rulings, it is extremely unethical and disruptive to other players when a player decides that they will challenge the ruling by arguing with the Director. It is particularly insulting when a player says as a response to a ruling "No one in this club knows what they are doing." Well you can imagine how that makes us feel – particularly when the Director was in the middle of playing a hand when called away. By the time the Director gets back to finish playing his hand, he is so cross that there is no way he can concentrate on playing the cards.

Players have rights and if you feel a ruling is wrong, all you need to say is "I would like to appeal that ruling". Then at the end of the session, the Director and two experienced players will determine if the ruling was correct and if necessary, make an adjustment. In fact, the more appeals, the better – it keeps us on our toes.

Glenys Clift

Providore's Report

The Christmas Party was a resounding success with one hundred and thirty-four members attending.

Several lucky door prizes were awarded and two Christmas raffles drawn. Thank you to the donors of prizes.

Following the presentation of Annual Awards, lunch was served with ham, chicken, salads, small puddings and all the trimmings.

It is rewarding to be told by many members that the function was so enjoyable.

Bridge was played by those able to stay and numerous novelty prizes were won.

No function is successful without the co-operation of members willing to assist. My special thanks go to Carmel Caton, Helen Walsh, Tricia Morton, Kate Mundt and Judy desJardins for the preparation of lunch; also to Helen Walsh and Pat Ziebarth for all the small puddings. Once again Pauline Graham also volunteered her services.

There are many other willing helpers too numerous to mention but thank you to the men who served the drinks, donors of cash and prizes, food for afternoon tea, the decorators of the room and any others.

I request that members observe the rule that "two pieces of food only, be taken until everyone is served." We serve afternoon tea and not lunch. This is a very old rule and not one of my making. Thank you.

With my best wishes for a Happy, Healthy New Year and pleasant Bridge Games during 2010.

Joyce Ziesemer
Providore



Welfare Officer

Please contact Glenda Filbee on 4636-7622 or at the club if you know of a member who is ill, hospitalized or suffering a bereavement and Glenda will respond suitably on behalf of the Club.

Club Teacher's Report

LESSON PROGRAM FOR 2010

Lessons start in the second week of February, Wednesday mornings 9am and Thursday evenings starting at 7pm. The course costs \$60 or \$4 per session for members who would like to revise any topic.

	Wed - Thu	Topic
1	10-11 Feb	Introduction to Bridge
2	17-18 Feb	Opening 1 No-Trump
3	24-25 Feb	Stayman over 1NT
4	3-4 Mar	Revision of 1NT Bidding
5	10-11 Mar	Opening Unbalanced Hands with a Fit
6	17-18 Mar	Opening Unbalanced Hands with No Fit
7	24-25 Mar	Opening Balanced Hands with 12-14 or 19-20
8	31 Mar 1-Apr	Revision
9	7-8 Apr	Benjamin Two Openings - Weak Two's
10	14-15 Apr	Benjamin Two Openings - 2C and 2D
11	21-22 Apr	Both sides in the bidding, Overcalls, and Take-Out Doubles
12	28-29 Apr	Both sides in the bidding, Negative Doubles, and Balancing Doubles
13	5-6 May	Pre-Emptive Bids at the Three Level
14	12-13 May	Looking for Slam

MONDAY SUPERVISED PLAY PROGRAM

Each year I repeat the same program for supervised play, mainly because what it covers is the basics. And while it is exciting for players when they branch out to try new conventions, if you haven't got the basics right, then you will continue to have problems.

You do not need a partner for Monday afternoon but I would ask that people try and get there by 12.15 particularly if you are coming by yourself.

1 Feb	Benjamin Twos – Opening 2H/2S
8 Feb	Benjamin Twos – Opening 2C/2D
15 Feb	Benjamin Twos – balanced hands
22 Feb	1NT Simple & Extended Stayman
1 Mar	Playing NT promoting winners
8 Mar	Bidding with a fit
15 Mar	The Barrier Principle
22 Mar	Bidding 4 card suits up the line and Forcing vs Non-Forcing Bids
29 Mar	When to draw trumps
5 Apr	Take out doubles and overcalls
12 Apr	Discards and Signals - McKenney
19 Apr	Negative Doubles
26 Apr	Landy
10 May	Doubling 1NT
17 May	Pre emps at the 3 level
24 May	Balancing doubles
31 May	Slam bidding
7 Jun	Unusual No Trump
14 Jun	Cue bidding the enemy suit
21 Jun	Michaels Cue Bid
28 Jun	Opening light in 3rd position

WORKSHOPS FOR 2010

This year I will be holding workshops on Thursday morning from 9 -11, but only during the first half of the year as I will be away from August to the end of October. If you are interested in coming to any of the following could you fill in the attendance sheets which will be put on the entry Notice Board.

MULTI 2'S for Standard American and Acol players - This is a five week course which will run on Thursday mornings in March.

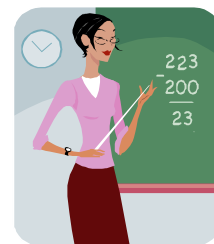
TRANSFERS OVER 1NT - Last Thursday in May

HAMILTON (CAPALLETTI) DEFENCE OVER 1NT - Last Thursday in June

ACE ASKING WITH CRO RESPONSES - Last Thursday in July

PLANNING THE PLAY

Copies of the book "Planning the Play of a Bridge Hand" by Barbara Seagram and David Bird have now arrived. If you have ordered a copy and for whatever reason cannot pick it up by the end of January, could you please let Glenys know. She will make sure it is kept aside for you. The cost is \$25.



Cheers,

Glenys Clift
Club Teacher



Bridge Club Gardens

It is amazing to me how the gardens have stood up to the prolonged drought we have had, thanks largely to Shaunagh and Anneke watering. Some plants have died and will have to be replaced, some have become unsightly and will also be replaced. To this end I ask members to donate their voucher for free plants from the council nursery, that we receive half yearly, leave them at the office please.

Later, as it gets cooler we will have a working-bee to tidy-up and plant replacements and some new additions too.

Lise Moore

HOWELL MOVEMENTS

One of the most important conditions that must be met when choosing a movement for Duplicate Bridge session is that the movement is fair and balanced.

If we consider a nine table Mitchell with three boards per round, then there are two entirely separate competitions occurring. On each board the nine NS pairs have their scores compared to each other and we find a NS winner for the day. The nine EW pairs are playing in a separate competition and we find a winner there also. In each field, they play all the 27 boards that are in play and they play 3 boards against every opposite pair. This is perfect balance and is fair provided the field is seeded correctly (eg a good mix of strong pairs amongst NS and EW and spread around the room).

Life is rarely ideal. As the number of tables decreases, lack of balance tends to dominate and mixed field strength has a stronger influence. For these reasons, a Howell movement is preferred (named after its inventor Edwin Howell, a Professor of Mathematics at Massachusetts Institute of Technology). In a Howell movement, all pairs are playing in the one field. On some boards they sit NS on others they sit EW. Professor Howell ensured that the basic Howell movement was as fair as possible and that your scores are compared with all other pairs as evenly as possible. Since those early days, and with the advent of computer scoring, more sophisticated Howell movements have been developed and players simply "follow the guide card" as each round is completed.

Some players do not like Howell movements because:

1. They do not like having to move so much.
Agreed - you move nearly twice as often in a Howell movement, and there is often only one stationary pair.
2. They do not understand the movement.
Guide cards make these movements relatively easy provided each pair remembers their number. In addition, the Bridgmate Desktop Scoring Units will display the pairs and boards that should be at each table.
3. They feel they are "chasing the bad cards".
The chances of getting a good or a bad

hand are the same whether you happen to be sitting NS or EW, just as the chances of a correct coin toss are the same whether you call HEADS or TAILS.

4. There is more board movement and more work for the Director.
True.

Good reasons for playing a Howell movement are:

1. The movement is fairer for small table numbers.
2. You get to meet all the other pairs.
3. You find one overall winner for the session or day.
4. If there happens to be a sitout, then the sitout will be for a smaller number of boards.
5. If you are playing in a multi-session event and the number of pairs is likely to change from one week to the next, then factoring of results will be very unfair in a Mitchell movement and will be very fair in the Howell movement.
6. More master points are awarded for a Howell movement than for an equivalent Mitchell movement.

Approximately 30-50% more depending on the actual movement. In fact, an odd number of tables in a Mitchell movement gives the least number of masterpoints.

The Magic Fairy

Did you know there is a magic fairy in our Club! When people spill tea over the table cloths and leave the wet table cloth screwed up somewhere, the magic fairy comes and takes it home to wash. Lovely.

The magic fairy also is very busy at the end of sessions, she runs around picking up cups with water, empties rubbish bins left at tables, washes up cups in the kitchen that people couldn't be bothered to take in when the kitchen lady was there. Sometimes she also replaces toilet rolls.

In other words, if you spill tea on a cloth, please take it home to wash: if you use the last paper on a toilet roll replace it: make sure you empty all rubbish and if you still have a coffee cup, please wash it up.

From: The Magic Fairy (who is getting a bit grumpy)

Red Masterpoint Events at the Toowoomba Bridge Club

Any ABF registered player may play in these events, but please note that only members of the Toowoomba Bridge Club may win club competitions.

Session	Event	Date
Tuesday Night	Social	9 th February 2010
Saturday	Social	6 th March 2010
Tuesday	Ivy Dahler Cup (1 of 3)	9 th March 2010
	Ivy Dahler Cup (2 of 3)	16 th March 2010
	Ivy Dahler Cup (3 of 3)	23 rd March 2010
Friday	Social	26 th March 2010
Thursday	Toowoomba Show Day	15 th April 2010
Monday	Restricted Pairs	26 th April 2010
Wednesday	Social	19 th May 2010
Wednesday	Joyce Benson Cup (1 of 3)	9 th June 2010
	Joyce Benson Cup (2 of 3)	16 th June 2010
	Joyce Benson Cup (3 of 3)	23 rd June 2010
Saturday	Clive Berghofer Pairs Champ (1 of 3)	26 th June 2010
	Clive Berghofer Pairs Champ (2 of 3)	31 st July 2010
	Clive Berghofer Pairs Champ (3 of 3)	28 th August 2010
Tuesday Night	Presidents Cup (1 of 3)	13 th July 2010
	Presidents Cup (1 of 3)	20 th July 2010
	Presidents Cup (1 of 3)	27 th July 2010
Thursday	Social	22 nd July 2010
Friday	Two Weekly	6 th August 2010 13 th August 2010
Monday	Restricted Pairs	23 rd August 2010
Saturday	AGM Social	25 th September 2010
Friday	Two Weekly	8 th October 2010 15 th October 2010
Tuesday	Social	19 th October 2010

In the following events red masterpoints are awarded across the whole field (all clubs that are participating).

Session	Event	Date
Sunday	Nationwide Pairs	24 th January 2010
Sunday	Nationwide Pairs	21 st February 2010
Sunday	Nationwide Pairs	25 th April 2010
Sunday	Nationwide Pairs	23 rd May 2010
Sunday	Nationwide Pairs	20 th June 2010
Sunday	Nationwide Pairs	18 th July 2010
Sunday	Nationwide Pairs	22 nd August 2010
Sunday	Nationwide Pairs	19 th September 2010
Sunday	Nationwide Pairs	17 th October 2010
Sunday	Nationwide Pairs	21 st November 2010
Saturday	Queensland Wide Pairs	27 th November 2010
Sunday	Nationwide Pairs	19 th December 2010

Toowoomba Bridge Club Championships

Clive Berghofer Pairs	Saturdays (3 session event)	26th June 2010 31st July 2010 28th August 2010
Friday Handicap Cup	Fridays (3 session event)	8 th January 2010 15 th January 2010 22 nd January 2010
Col Martin Shield	Tuesday Nights (Eclectic event using best 4 of 6 scores)	2 nd February 2010 2 nd March 2010 6 th April 2010 4 th May 2010 1 st June 2010
Ivy Dahler Cup	Tuesdays (3 session event)	9 th March 2010 16 th March 2010 23 rd March 2010
Tuesday Night Pairs Championship	Tuesday Night (4 session event)	9 th March 2010 16 th March 2010 23 rd March 2010 30 th March 2010
Wednesday Handicap Cup	Wednesdays (3 session event)	10 th March 2010 17 th March 2010 24 th March 2010
Ivy Dahler Novice Teams Championship	Saturday (2 sessions)	13 th March 2010 20 th March 2010
Thursday Teams Championship	Thursday (4 session event)	6 th May 2010 13 th May 2010 20 th May 2010 27 th May 2010
Thursday Singles Championship	Thursday (4 sessions)	3 rd June 2010 10 th June 2010 17 th June 2010 24 th June 2010
Tuesday Night Singles Championship	Tuesday Night (4 session event)	8 th June 2010 15 th June 2010 22 nd June 2010 29 th June 2010
Joyce Benson Cup	Wednesdays (3 session event)	9 th June 2010 16 th June 2010 23 rd June 2010
Presidents Cup	Tuesday Night (3 session event)	13 th July 2010 20 th July 2010 27 th July 2010
Tuesday Night Teams Championship	Tuesday Night (4 session event)	3 rd August 2010 10 th August 2010 17 th August 2010 24 th August 2010
Ivy Dahler Novice Pairs Championship	Saturday (2 sessions)	4 th September 2010 11 th September 2010
Thursday Pairs Championship	Thursday (4 sessions)	26 th August 2010 2 nd September 2010 9 th September 2010 16 th September 2010

State and National Events at the Toowoomba Bridge Club

Session	Event	Date
Wednesday	Grand National Pairs – Club Qualifier (gold for players below life master) 3 session event	14 th July 2010 21 st July 2010 28 th July 2010
Saturday	Grand National Pairs – Club Qualifier (gold for players below life master) 3 session event	7 th August 2010 14 th August 2010 21 st August 2010
Sunday	Grand National Teams – Club Qualifier	To be advised



Club patron Clive Berghofer congratulates Eileen Josey (left) and Val McClement, the winners of Toowoomba Bridge Club's major trophy, the Clive Berghofer Shield. Clive was guest of honour at the club's Christmas party and prize presentation on Saturday 12 Dec 09.



President Chris got a bit up close and personal with popular provider Joyce at the Christmas party, where he paid tribute to the huge effort by Joyce and helpers throughout the year.